

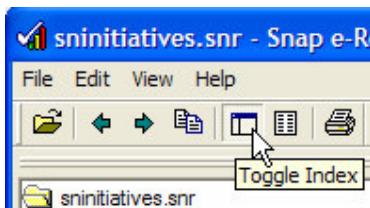


How to use the e-Results Viewer

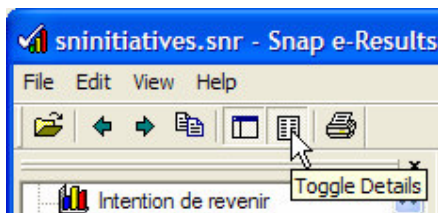
When you start up the Viewer, you will see a window like the one underneath. By using the small triangle at the bottom right, you can adjust the window's size. You may of course also use the buttons up-right in the blue Windows bar.

Normally, the full list of available results will already appear on the left when you open a results file (of type .snr). (Just doubleclick on a file of type .snr – and the Viewer will start up automatically, or start the Viewer and then use the Open icon, which is the first one at the left in the toolbar).

Under View in the Menu, you can set the zoom percentage of the upper right part of the window, where the result is being displayed. With Fit to Screen you will have it brought to its maximum possible size.



Toggle Index will show/hide the list of available results.



Toggle Details open/closes an extra window at the bottom right.

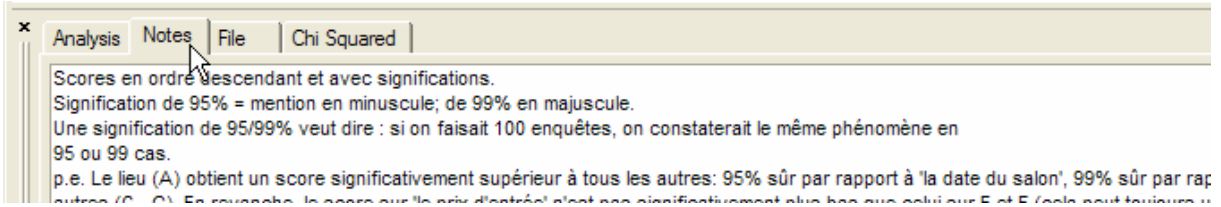
This windows has 4 tabs:

Analysis : shows the analysis details (table or graph)

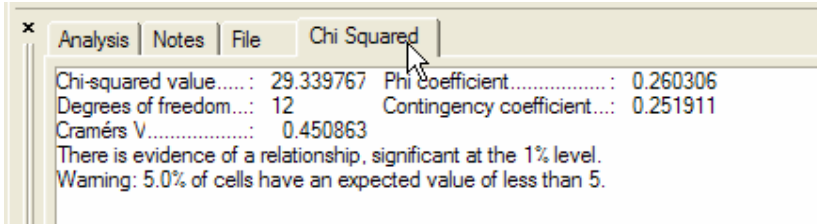
Notes : text that comments the result

File : detailsof the results file

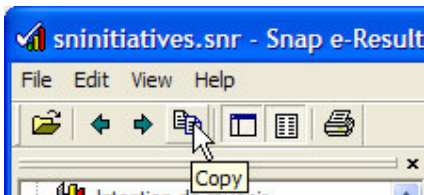
Chi Squared : the result of a Chi-squared correlation test



When you click on the Nodes tab, the text will be displayed

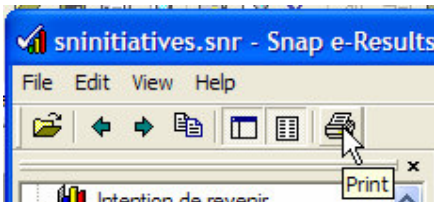


When you click on the Chi Squared tab, the result of the Chi squared test will be displayed (indicating whether or not there is a correlation between variables)

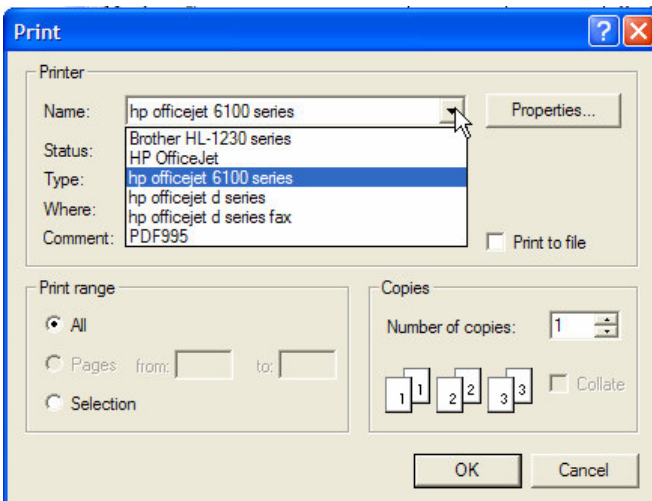


Clicking on Copy, will copy the content of the active result to the Clipboard. Afterwards, you can go into another program (such as Word, Excel, Powerpoint) and Paste the Clipboard's content.

With Paste, you will copy the results by 'Value' (except in Powerpoint, where it will always paste as an image). With Paste Special, you will transfer the result as an image.



Clicking Print will open a dialogue window where you can select :



- the printer of your choice
- the number of copies
- All or Selection (i.e. only the result currently on display will be printed)